

# WHADDON

# NEWS

MARCH  
2025



[www.whaddon.org](http://www.whaddon.org)

## FROM THE EDITOR

Taking over from Joan as the new editor for the Whaddon News is a challenge, but one that I hope to rise to over the coming months. Please do get in contact if you have any helpful suggestions.

There have been previous ideas about future inclusions to the newsletter, such as a children's page, local recipes or puzzles, so as an experiment we have included a crossword puzzle in the March edition. Feedback would be really helpful. We want to know how you would like to see things develop. Any items of local interest are always very welcome.

The deadline for the next edition is 9<sup>th</sup> May and all submissions should be sent to Viv at [newseditor@whaddon.org](mailto:newseditor@whaddon.org)  
Should your organisation meet after this date please let me know what you would like to include and I will plan accordingly.

## DATES FOR YOUR DIARY

5 <sup>th</sup> Mar	Coffee Morning		
10 <sup>th</sup> Mar	PC Meeting	May TBA	Possible Quiz Night
12 <sup>th</sup> Mar	Quiz at Golf Centre	7 <sup>th</sup> May	Coffee Morning
19 <sup>th</sup> Mar	Coffee Morning	12 <sup>th</sup> May	PC Meeting
19 <sup>th</sup> Mar	Ship of the Fens Talk	21 <sup>st</sup> May	Coffee Morning
28 <sup>th</sup> Mar	Slice of Price Pizza	4 <sup>th</sup> June	Coffee Morning
2 <sup>nd</sup> April	Coffee Morning	6 <sup>th</sup> June	Beer Festival
14 <sup>th</sup> April	PC meeting	7 <sup>th</sup> June	Beer festival
16 <sup>th</sup> April	Coffee Morning	7 <sup>th</sup> June	Whitsun Folk Evening
19 <sup>th</sup> April	Easter Egg hunt	8 <sup>th</sup> June	Beer Festival
25 <sup>th</sup> April	Slice of Price Pizza	8 <sup>th</sup> June	Whitsun celebrations
28 <sup>th</sup> April	Annual Parish meeting	8 <sup>th</sup> June	BBQ at Golf Centre
2 <sup>nd</sup> May	Shred the Shires	9 <sup>th</sup> June	PC Meeting
3 <sup>rd</sup> May	Shred the Shires	18 <sup>th</sup> June	Coffee Morning
4 <sup>th</sup> May	Shred the Shires	20 <sup>th</sup> June	Slice of Price Pizza
5 <sup>th</sup> May	Shred the Shires	12 <sup>th</sup> July	Whaddon Fete

## VILLAGE HALL HIRE

Special rates for those within the village. Ideal for birthday parties and most functions.

Village rate £9 per hour

Non- village rate £15 per hour

Please contact  
whaddonhalltrust@whaddon.org



## PARISH COUNCILLORS

Dr Nigel Strudwick	Chairman
Deborah Townsend	Vice Chair
Anita Birch	Councillor
Will Elbourn	Councillor
Joanne Hart	Councillor
Ben Fairclough	Councillor
Angela Culver	Parish Clerk / Finance Officer

All Parish Council Enquiries should be made to the Parish Clerk

Tel 07565 381203  
whaddonparishclerk@outlook.com

## WHADDON NEWS

### ADVERTISING RATES

Single / Four issues

Quarter page	£10	£32
Half Page	£15	£48
Full Page	£25	£80

Contact Parish Clerk- Angela Culver

whaddonparishclerk@outlook.com

## **BIN COLLECTION DATES**

			<b>Thursday 6<sup>th</sup> March</b>
<b>Thursday 13<sup>th</sup> March</b>			<b>Thursday 20<sup>th</sup> March</b>
<b>Thursday 27<sup>th</sup> March</b>			<b>Thursday 3<sup>rd</sup> April</b>
<b>Thursday 10<sup>th</sup> April</b>			<b>Thursday 17<sup>th</sup> April</b>
<b>Thursday 24<sup>th</sup> April</b>			<b>Thurs 1<sup>st</sup> May</b>
<b>Thursday 8<sup>th</sup> May</b>			<b>Thursday 15<sup>th</sup> May</b>
<b>Thursday 22<sup>nd</sup> May</b>			<b>Thursday 29<sup>th</sup> May</b>

## WHADDON NEWS

### WHADDON VILLAGE FETE Saturday 12<sup>th</sup> July 2025



The Village Fete Committee has started planning for this year's Whaddon Village Fete which will take place on the **Recreation Ground** on the afternoon of **Saturday 12<sup>th</sup> July**. The aim is to build on the success of last year's fete and to provide an event for the whole village, as well as visitors from the surrounding area. The Committee is currently reviewing the categories for the Produce Show to again encourage more entries, and the categories for this year's show will be set out on a flyer that will be distributed to all households during March.

Delivering a successful fete will require the input of a significant group of helpers. Assistance will be needed in setting up the fete on the evening before, setting up and running stalls on the day, and then clearing everything away afterwards. The committee are extremely grateful to all those who helped last year, but many hands make light work and it would be much appreciated if more villagers might consider lending a hand. If you are able to get involved with this year's fete please contact any member of the fete committee listed below.

Fete Committee: Anita and Jonathan Birch, David Grech, Lorna Green, Claire Hales, Deborah Townsend, Caroline Trotter, David Short.

## COFFEE MORNINGS

Coffee mornings continue to be popular with sufficient numbers attending to enable all running costs to be covered. There is always a choice of two homemade cakes to go with a cup of coffee or tea for £1.50 – a bargain! The sessions are held from 10.30am to 12 midday on the first and third Wednesday of each month and everyone is welcome.

## WHADDSAPP

Whaddon's own "Whatsapp" group run by volunteer administrators is a popular source of information around the village. Some of the recent posts have included;  
Alerts regarding delays on local roads.

Lost dogs to be looked out for.  
Trapped sheep needing rescuing.  
Recommendations for local trades.  
Items of all sorts free to villagers including waste food.  
It's easy to use and great for getting to know your community. - just ask an administrator to add your details and explain how it works. Highly recommended especially if you're new to the village. Current admins; Anne Newberry, Annabel Bradford and Deborah Townsend.

## WHADDON VILLAGE HALL TRUST

Jonathan Birch	Chair
Karen Coningsby	Secretary
Peter Haselden	Treasurer
Gabby Van Poortvliet	Member
Claire Hales	Member
Marine Boulter	Member
Steve Coningsby	Member
Terry Allison	Holding Trustee
Lee Ginger	Holding Trustee

Please send all enquiries to  
[whaddonhalltrust@whaddon.org](mailto:whaddonhalltrust@whaddon.org)  
(including Village hall bookings).

## WHADDON GOLF CENTRE

### Welcome 2025

**Spring is bursting out at the golf centre. Many of the snowdrops are out and some of the daffodils are blooming.**

**We have had some great quizzes this year. Thanks to all who took part and especially to those who set a quiz. Our final one of the season is on Wednesday 12<sup>th</sup> March - all are welcome. Please book a team.**

**Due to popular demand the Easter egg hunt is back on Sat 19<sup>th</sup> April. £5 per child including an egg hunt and an Easter goodie bag. Look out for the Easter bunny and other special guests.**

**We look forward to hosting Slice of Price Pizza on Fri 28<sup>th</sup> March, Fri 25<sup>th</sup> April and Fri 20<sup>th</sup> June.**

**Our Real Ale festival will be held on Fri 6<sup>th</sup>, Sat 7<sup>th</sup> and Sun 8<sup>th</sup> of June to complement the Whit weekend.**

**There will be a BBQ on Sunday, 8<sup>th</sup>**

**We look forward to seeing you all soon.**

**Lorna and Richard**

## **SHRED THE SHIRES**

### ***A Wheely Good Time Coming to Our Village!***

***Get ready for some excitement this May bank holiday weekend***

*From Friday, 2nd May to Monday, 5th May, we'll be hosting **Shred the Shires**, a unique and family-friendly event celebrating the increasingly popular sport of **Onewheeling**.*

*What's a Onewheel, you ask? Imagine a self-balancing electric skateboard – that's the gist of it! Riders of all ages and skill levels will be gathering for a weekend of fun, competition, and community. While the event is ticketed and limited to 150 pre-registered attendees, we encourage local residents to come join us. (Tickets for spectators are free.)*

*Shred the Shires is more than just a gathering of Onewheel riders. It's a truly international affair, with participants booked from across Europe and North America! This gives our village a fantastic opportunity to welcome visitors from around the globe.*

*So, what can you expect? The event will have a range of activities, including social gatherings for Onewheel enthusiasts, an official European Onewheel League Race, and a trick competition showcasing skills. Evening entertainment will also be on offer, but don't worry - everything will wrap up before 11 pm each night, ensuring minimal disruption.*

*We're proud to be offering top-notch amenities. Delicious food will be provided by a former chef (from the renowned Bury Lane Farm Shop!), plus a bar and snack stall on-site.*

*Safety and security are paramount. The event area will be enclosed with temporary fencing, and our team of 11 organisers (including local residents with backgrounds in event management, healthcare, engineering, and education) will be on-site throughout the weekend. We're committed to responsible waste management, ensuring all rubbish will be collected and disposed of correctly.*

*Shred the Shires is a not-for-profit event organized to promote the enjoyment of Onewheeling and build a strong sense of community. We hope you'll join us and experience the excitement firsthand! Come along, see what Onewheeling is all about, and perhaps even discover a new passion!*

**Mark Coningsby**

**Shredtheshires.co.uk**

*Team member Kate taking second place*



**BURY LANE**  
- EST 1983 -



## House Plant Glasshouse Open Weekend

Saturday 29th March 10am-4pm

Sunday 30th March 11am-4pm

Tour the glasshouses  
and buy our peat free house plants  
direct from the growers

Your local, independent Farm Shop  
Open 7 days a week, large free car park.  
Follow us on social media for PYO, seasonal produce & events

Bury Lane, A10 Bypass, Melbourn, Royston, SG8 6GT

What3Words: months.wells.tanks

Tel: 01763 260418 [www.burylane.co.uk](http://www.burylane.co.uk)

FOOD HALL • DELICATESSEN • BUTCHERS • FISHMONGERS • CAFÉ

GIFT HALL • GARDEN SHOP • FUN BARN



**BURY LANE**  
- EST 1983 -



## Pick Your Own Tulips

### Easter At Bury Lane

Home Grown Asparagus  
(from late April)

## Beach @ Bury Lane

Your local, independent Farm Shop  
Open 7 days a week, large free car park  
Follow us on social media for PYO, seasonal produce & events

Bury Lane, A10 Bypass, Melbourn, Royston, SG8 6GT

What3Words: months.wells.tanks

Tel: 01763 260418 [www.burylane.co.uk](http://www.burylane.co.uk)

FOOD HALL • DELICATESSEN • BUTCHERS • FISHMONGERS • CAFÉ

GIFT HALL • GARDEN SHOP • FUN BARN



## WHITSUN

### Whitsun in Whaddon in 2025 will be 7–8 June

Whaddon Whitsun continues as usual in 2025, but this year will be a special celebration, since it marks 20 years since we revived and updated the tradition at Whitsun in 2005!

**So please put the date in your diaries now: 7–8 June 2025**

As so often, Whitsun does **not** coincide with the Late May Bank Holiday. Fuller details will be available nearer the time at <https://www.whaddon.org/whitsun>.

**The format will be similar to previous years:**

**Saturday evening (7 June)** – Folk Evening in the Village Hall from 19:00 to 23:00.

There will be music, ceilidh dancing and Morris dancing, with food and drink available—all included in the price of the ticket. Don't miss the performance of the village's very own Whitsun Song!

**Sunday (8 June)** – processions from Meldreth Road and Dyer's Green with Morris dance spots on the way, starting at about 10:15.

One thing that will make this year special is that we have managed to get some extra teams to come along for the celebration. In addition to our old friends, White Rose, Manor Mill and Devil's Dyke, we also hope to have the presence of Rutland Morris and Chiltern Hundreds Clog Morris. Rutland Morris come, as their name suggests, from England's smallest county, while Chiltern Hundreds hail from the Bushey area.

As we have more teams than usual, we are still working on the logistics of the processions. However, we will all meet for a combined show at the Village Hall before going up to St Mary's church for the Whitsun service at 12:30. The Whitsun Song will be sung in the church, and there will be dancing either in or outside St Mary's. Everyone will then move to the Golf Centre, where Lorna and Richard will again be running their beer festival.



There will be yet more dancing there. More precise details, including timings, will be shared as we get the event organised.

We would love to see as many villagers as possible over the course of this weekend, especially those who are new to Whaddon. If you want to know more about the history of the Whitsun celebrations here, there is an article about it on the village web site:

<https://www.whaddon.org/whitsun> – look on the “About” tab.

We look forward to seeing you.

Helen and Nigel Strudwick  
whitsun@whaddon.org



White Rose Morris Men dancing outside the Village Hall, Whitsun 2023 © Steve King



## ST MARY'S CHURCH WHADDON

### CHURCH SERVICES

5 <sup>th</sup> March	Ash Wednesday	Whaddon 7.30pm
30 <sup>th</sup> March	Mothering Sunday	9.30 am
13 <sup>th</sup> April	Palm Sunday	9.30 am
17 <sup>th</sup> April	Maundy Thursday	7.30 pm
20 <sup>th</sup> April	Sunrise Service Easter Sunday Holy Communion	5.30am field opp church 9.30 am
11 <sup>th</sup> May	Holy Communion followed by APCCM	9.30am
8 <sup>th</sup> June	Whit Sunday Service	12.30 pm

### POSY MAKING FOR MOTHER'S DAY - SAT 29TH MARCH

Posy making in the church around 10.30 am. All children accompanied by a parent are welcome to come and help make posies. Many hands make light work. Please come and join us.

#### CONTACT DETAILS FOR REV HELEN ORR

Tel: 07761 241190 Email: [Vicar@whaddon.org](mailto:Vicar@whaddon.org)

My days in the parishes are Tuesdays and Thursdays and weekend services



### Thank you from St Mary's

Many thanks to all those who turned out to enjoy and support the singalong at the Golf Centre and the carol singing round the village at Christmas. We raised an amazing **£309.53** for church funds from donations and from the sale of Richard and Lorna's mulled wine.

Jenny

Whaddon PCC Treasurer

## PLOUGH SUNDAY

On Sunday 12th January St Mary's Whaddon held its first (in living memory) Plough Sunday service. Rev'd Amanda O'Neill put together a lovely order of service reflecting the history of the special day.

Plough Sunday goes back to Victorian times but behind it there is a much older observance, associated with the first working day after the twelve days of Christmas, hence 'Plough Monday' in some places. In days when work was scarce in winter, the observance looked forward to the time of sowing with the promise of a harvest to come.

It is hoped that the service can be developed further next year.



The tractor was kindly supplied by the Coningsby family.

## ST MARY'S WHADDON FABRIC FUND

We are currently fund-raising to undertake repairs to the flintwork on the north elevation and to one of the buttresses at St Mary's, and we would like to thank all those who attended the talk on the island of St Kilda in January, which raised £330 towards those repairs.

Our next fundraising event will be another illustrated talk, entitled '**The Ship of the Fens**', by Nigel Strudwick, who is an official guide at Ely Cathedral. That talk will be in the Village Hall on Wednesday 19<sup>th</sup> March at 7:30pm. Tickets are £7:50 each and include a glass of wine or soft drink, and can be obtained from David Grech (tel 01223 208938), or the Golf Centre.

Karen Coningsby and David Grech  
Churchwardens, St Mary's Whaddon



## NATURE NOTES MARCH

Lent starts with Ash Wednesday on 5<sup>th</sup> March and lasts until Holy Thursday on 17<sup>th</sup> April (in 2024 it lay in February). The word stems from the old english *lencten*, to lengthen, as these spring days are doing in our approach to Easter. Up on the downs, above the Royston golf course, there will be a swathe of purple pasque flowers (part of the *pulsatilla* family) in bloom. Also called the Easter flower, they symbolise rebirth and new beginnings. In fact “pasque”, is a most accommodating word, for it is either derived from *paschal*, meaning “of Easter” or from the latin word (via French) “*pascha*”, meaning *Passover*, which this year is from April 12<sup>th</sup> to 20<sup>th</sup>.

**Dandelions** (*taraxacum officinale*) will soon be everywhere, “Shining like guineas with the sun’s warm eye on/We almost think they are gold as we pass/Or fallen stars in a green sea of grass” writes the ever-reliable countryside poet, John Clare in

*From a Rhapsody.*

John Lewis-Stempel

“*Taraxacum*’s

precise 360-degree basal

of playing cards, then the soft-

finger-run, and the fierce regularity of the “teeth” on the leaves... that gives us the old french *dents-de-lion*.” Their folk-name is “four o’clock” as

their flowers open about seven a.m. in mid-March and close at around four

p.m. Dandelions may also change the way we produce rubber in future.

According to Jane Adams in *Nature’s Wonders*, the sticky residue oozing from the stalk of a picked dandelion has the same compounds as the latex produced by a rubber tree but, unlike with rubber, polluting solvents are not required for the compound’s extraction. And the plant can be grown on poor soil in temperate climates.



describes them, thus:

sublimities are subtle: the rosette, a magician’s fan-flourish

Eden Phillpotts said in 1923 (*A Shadow Passes*): “The universe is full of magical things patiently waiting for our wits to grow sharper.” And that is so like spring. One day you step outside or walk your favourite track, and there, low and behold, is a mass of flowers or buds or leaves or frogspawn, or the song of birds, which you would swear were not there yesterday, but actually must have been something approaching what you are witnessing today, only your wits were elsewhere at the time.

And the first weeks of March, there is always something new to witness. Your robin and the tits will be nesting in your nestboxes or ivy. And overhead, buzzards (the male with more marked wing patterns than the

female) will be catching a thermal to rise higher than a small plane flies, only to drop to earth in a long stoop. This “kettling” is a display flight. The great spotted woodpecker will be drumming his display sound to attract a mate; the cherry plum and wild plum will be in full flower, and then the blackthorn (sloe) will flower and the hawthorn in leaf burst, and the weeping willows will be yellow with new growth.

And on those “daffodil days” of 15° plus, the over-wintered (yellow) brimstone and red admiral butterflies, perhaps looking a little tattered, will lift your heart as they fly across your sightline. You will catch honey bees amongst the primroses and iris reticulata, the hyacinths, anemone blanda and scylla, flowers scattered like thrown jewels through the grass.

And in the lengthening evenings, the blackbirds will be getting themselves into a frenzy with their alarm calls and, whilst the trees’ branches are still bare of leaves, all bird song in the evening sounds echo-ey. This is the month when you will also



hear your first-of-the-year onomatopoeic chiffchaff (around 17<sup>th</sup> -20<sup>th</sup> March) and **the blackcap** or Norfolk’s “mock nightingale” (around 27<sup>th</sup> March – 7<sup>th</sup> April, the date we usually greet our first swallow!). The blackcap’s song is long and fast, multi-pitched, with both scratchy and clear notes.

I always think of February, March and April as being the months of promise, building up to the fulfilment months of May, June and July. It is an exciting time to have your wits about you. And yet our nights will be frosty and we can still have snow late in the month. Indeed, in 2021, we had snow on 7<sup>th</sup> April!

Blue tits will time their egg laying to the leaf burst of the birch trees, so as to be in step with the emerging caterpillars. She will take around two weeks to lay about 12 eggs (white with red flecks, 1g each, a total weight more than her body weight of 10g) and she will incubate them for two weeks. The young blue tits will leave the nest after 18 days and be fully independent after 4 weeks. And **each** of those chicks needs around 100 caterpillars a **day** (I don’t know how many exclamation marks to add to that sentence!). Luckily the male helps feed, but even so, timing the hatch to when the caterpillars are emerging to feed on new leaf growth is critical (or mealworms and wax moth larvae from your bird table. Apparently, we spend £250 million a year here in the UK on 150,000 tonnes of bird food.)

On a warm spring day, you may be lucky enough to see a grass snake (*natrix helvetica*) on your walk. Also known as the ringed

## NATURE NOTES cont.

snake or water snake, they seem to have become more common hereabouts, feeding on our amphibians. They are harmless but reaching between 3 and 5 feet (90-150 cm) in length and can easily be identified by their yellow or white collar behind the head.



Even more exciting than seeing a grass snake, would be to see a **slow worm** (*anguis fragilis*: *anguis* is latin for snake; *anguere* is to throttle, from which we get, not unnaturally, anguish), and possibly the most productive way is to lift up flat stones or logs, as they will often be lying for warmth under these. Also known as the deaf-adder, blind-worm and long-cripple, they are not deaf, blind, long, slow or even a worm. They are not a snake either, but a legless lizard (they have eyelids that blink, unlike a snake, and a tongue that is notched rather than forked). Slow worm comes from the old english *slawyrm*: *sla* from the swedish for earthworm, and *wyrm* meaning legless dragon. I used to keep them as a boy in a vivarium and they are beautiful, with the smoothest skin of interlocking scales, brown, golden or gunmetal grey, but they will only reach some 50 cm in length. Emerging from the ground or your compost heap on warm spring days, they will feed on slugs and beetles that are also beginning to multiply. They are timing **their** appearance to coincide with the garden weeds, which from the third week of March are suddenly in overdrive. At this point in the article, all gardeners reading this suddenly have a vision of Edvard Munch's The Scream in their mind's eye.

And from our feet, we look up to the heavens. March's worm moon is on March 14<sup>th</sup>, when the moon is furthest from the earth (its apogee), and will look a little smaller than usual. The full moon is obviously when the sun and the moon (our natural satellite) are aligned on opposite sides of the earth and is thereby fully illuminated. Except from 5.09 a.m. building to 6.19 a.m. when there will be an almost total lunar eclipse, as the shadow of the earth (our umbra) falls across the moon's surface and turns the moon red (the blood moon). This lasts until moonset, 3 minutes later.

Saturn's rings will disappear in 2025. The sixth planet's rings have been closing for a few years and in March they will become invisible from earth until November. The phenomenon occurs because saturn orbits the sun every 29 earth years and rotates on an axis tilted by 27°. Consequently, every 14-and-half years, saturn's tilt aligns the rings with the line of sight from earth, so we temporarily see them edge-on.

Perry Littleboy

## WHADDON GOLF CENTRE

01223 207325

[www.whaddongolfcentre.co.uk](http://www.whaddongolfcentre.co.uk)

Tuesday to Sunday

**Open to All**

9 Hole Par 3 Approach Course

Bar

Driving Range

Coffee

Tuition

Snacks and Ice Creams

Newspapers



**Located in Wimpole Village Hall and serving the surrounding villages.**

**Open Monday to Friday during term time.**

**For 2 to 4 year olds.**

Highly experienced staff provide stimulating learning experiences through play and structured activities.

Spacious, versatile indoor play space and exciting garden area.

Dedicated Rising 5s session, links with local primary schools.

For more information visit: [www.mothergoosepreschool.co.uk](http://www.mothergoosepreschool.co.uk)

email: [admin@mothergoosepreschool.co.uk](mailto:admin@mothergoosepreschool.co.uk) or

phone: 01223 208527.



## Knit and Natter



**Mondays 5-7 at the Village Hall**

Do you have unfinished projects in a cupboard?

Have you always wanted to learn to knit or crochet?

Do you just fancy a bit of company whilst knitting and purling?

Don't feel limited to knitting or crochet, we have needlework going on as well!

Come and join us!

Subs are £6.00 a month or £2.00 for a drop in if you can't make it every week.

We welcome all ages, under18s are £2.00 a month.

If you want more info email Diane Faben [edfaben@gmail.com](mailto:edfaben@gmail.com)

## Table Tennis in the Village Hall Tuesdays 20:00 to 21:00



We have two table tennis tables and other equipment is provided. The cost is £2.00 per person per week. There are about half a dozen regular players.

Anyone who would like to join us are very welcome. An hour of fun and exercise and an opportunity to meet other villagers.

Those interested please contact Nigel Strudwick, [ncs3@cam.ac.uk](mailto:ncs3@cam.ac.uk)

Hope to see some new faces soon



## REGULAR ACTIVITIES AT THE VILLAGE HALL

Monday	17.00-19.00	Knit and Natter
Tuesday	9.15-10.15	Yoga
	18.00-19.30	Dog Training
	20.00-21.00	Table Tennis
Wednesday	10.30-12.00	Coffee Morning (1st and 3rd)
Thursday	18.25-20.25	Pilates
Friday	19.15-11.30	Yoga
	17.45-19.15	Dog Training
	20.00-22.00	Royston and District Model Railway Club



LOUISE TRENWITH

# BONFITNESS PILATES

Est. Sept 2011

AT LOCAL VENUES

[WWW.BONFITNESSPILATES.CO.UK](http://WWW.BONFITNESSPILATES.CO.UK)

[louise@bonfitnesspilates.co.uk](mailto:louise@bonfitnesspilates.co.uk)

07867 675 389

PILATES MAT CLASSES & ONE TO ONE SESSIONS

# SUSTAINABLE WHADDON

Opportunities to enhance ecology and biodiversity

Opportunities to reduce our carbon footprint

## DOMESTIC HEAT PUMPS

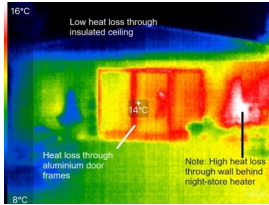
If you are looking to reduce your carbon footprint and to move away from heating your home with an oil-fired or LPG boiler, then one option might be to install a domestic heat pump. There are two basic types of heat pump; air-source heat pumps and ground-source heat pumps, and both operate in a similar way that has been likened to a fridge in reverse. They do this by taking low-grade heat from the air or ground, and compressing it to upgrade it to medium grade heat suitable for use in heating both internal spaces and hot water. There is therefore no boiler as such, and the equipment only requires electricity to operate the pumps, fan and compressor. The most common, and easiest to install, are air-source heat pumps. These need to be located externally, where air can be passed over the heat exchanger unit. Ground source heat-pumps take their heat from the ground, and require either a long run of pipework laid in a continuous zig-zag under a lawn, or a borehole to collect heat from depth.



*An air-source heat-pump fitted to the side of our house in Whaddon*

The temperature of the hot water output from a heat pump is not as high as that from a conventional boiler, and heat pumps therefore work well with underfloor heating, where a large area can be heated to a lower temperature. However, they can also be used with conventional radiators, but it is then necessary to increase the surface area of the radiators to compensate for the lower operating temperature. In a retro-fit installation, it is likely to be necessary to change single panel radiators to double-panelled, and double-panelled radiators to triple panelled. Similarly, a larger heat-exchanger is required in the hot water cylinder to heat the domestic hot water. Because heat pumps heat the radiators to a lower temperature, they are also designed to operate continually and to heat the house 24/7, though they drop to a lower operating temperature overnight. Their lower out-put temperature makes heat pumps less suited to heating a house up from cold in the morning and evening, which is often the conventional set-up for controls on gas or oil-fired boilers and where the occupants are out at work or school during the day, and a heat pump will take longer than a conventional boiler to bring a

house up to the desired temperature. With a well-insulated home, a heat pump can keep a house up to a pre-determined temperature without incurring excessive running costs and, with the increase in home-working, many more houses now require heating throughout the course of the day. Upgrading insulation in houses will be the subject of a separate, future article, but photographing your house with a thermal imaging camera can help identify areas of significant heat loss that would benefit from additional insulation.



*Examples of a thermal imaging photographs with different aged buildings and types of construction, that illustrate the changing standards required by the Building Regulations. Left a building from the 1990s, Below right - our house built in 2003.*

By way of an example; we live in a 3-bedroom, timber-framed house built in 2003 that is relatively well insulated. In December 2018 we changed our heating from an electric-fired boiler running conventional radiators, and with the controls set for heating in the morning and evenings, to an air-source heat pump set to run continually at 20° C during the day and 16° C at night. The work included changing all our radiators for ones with a larger surface area and, subsequently, we also changed our hot water cylinder to one with a larger heat exchanger (it proved a false economy not to have done this at the time). Prior to installing the heat pump, our total annual energy consumption for heating, hot-water, lighting and cooking was 9,000 KWh, but after the changeover our energy usage dropped to 4,500 KWh per annum. So, a 50% reduction in energy usage, but with heating now provided throughout the day. Since this coincided with our retirement, it also suited our change in lifestyle. Electricity prices have increased over recent years, but so too has the price of oil, and we believe our total energy costs per annum remain competitive.



Heat pumps are manufactured with a variety of out-put capacities, and there will be a heat pump to suit most domestic installations, though very large, or poorly insulated houses may require two heat pumps working together. Currently, grants of up to £7,500 are available from the Government towards the cost of installing an air-source or ground-source heat pump (subject to conditions) and we benefitted from such a grant when we installed our heat pump.

David Grech, on behalf of Sustainable Whaddon.

## ROYSTON AND BUNTINGFORD HOMESTART

### Give a child the best start in life – Volunteer with Home-Start

Childhood can't wait. The early years shape a child's future, but many families struggle with challenges that make parenting even harder. If you're a mum, dad, grandparent, or carer with **2-3 hours a week to spare**, you could make a life-changing difference for a local family.

As a Home-Start **Family Support Volunteer**, you'll be trained to be there for parents when they need it most—helping them create a safe, loving, and nurturing environment for their children to thrive.

#### What you'll gain from volunteering

- ✓ The chance to change a child's future for the better
- ✓ Valuable skills in empathy, communication, and problem-solving
- ✓ A sense of purpose, personal growth, and new friendships
- ✓ Free, high-quality training and ongoing support

We need compassionate volunteers. Please spread the word and help us find the volunteers we need as demand for our services continues to grow.

#### Job Opportunity

As well as recruiting volunteers Home-Start Royston, Buntingford & South Cambridgeshire are looking for a confident and organised individual who thrives in event planning, community engagement, and working collaboratively to make a real difference.

If you:

- Have experience organising large events?
- Feel comfortable managing budgets and finances in Excel?
- Enjoy asking for donations and support from others?
- Love socialising and engaging with the community?
- Thrive in a collaborative, supportive team environment?
- Want to make a lasting impact in the lives of families with young children?

...we'd love to hear from you!

For more details or an informal chat, please get in touch with Sarah at 01763 262262 or email Sarah@hsrsc.org.uk.

**HOME  
START**  
Royston, Buntingford &  
South Cambridgeshire

## LIBRARY SERVICES

### BASSINGBOURN COMMUNITY LIBRARY



#### The Old School Community Centre

##### Normal Opening Hours:

Monday 2 - 4.30pm

Thursday 2 - 4.30pm

6 - 8pm

Saturday 10 - 12 noon

[bassingbourncommunity.library@gmail.com](mailto:bassingbourncommunity.library@gmail.com)

Membership is free

Refreshments available

Tel: 07593 853189

### THE LIBRARY PRESENTS

[www.library.live/the-library-presents](http://www.library.live/the-library-presents)

Cambridge Libraries are offering a range of spring events in some of their libraries across the region.

These include workshops for samba drumming, making images in clay and fused glass, and performances of dance and folk music.

These are ticketed events held across Cambourne, Arbury, Histon and Papworth Libraries, and a full programme will be available to view and tickets available to buy at the above web address.

A list of events should also be available on Cambridge Libraries Facebook page.

### MOBILE LIBRARY

Meldreth Road Every 4<sup>th</sup> Weds

10-10.30am

Weds 26<sup>th</sup> March

Weds 23<sup>rd</sup> April

Weds 28<sup>th</sup> May

Library Live also has resources for a variety of subjects including...

anxiety  
stress  
gardening  
money  
local history  
mental health

...with suggested books and articles to read, podcasts to listen to and groups you can attend, although some of these may not serve all post codes.

## CAMBRIDGE FIRE AND RESCUE

### Take Charge and Be Safe

Cambridgeshire Fire and Rescue Service has seen an increase in fires involving lithium-ion batteries over the last few years. These batteries can heat up and cause a fire if not used correctly.

Devices containing lithium-ion batteries include mobile phones, laptops, games console controllers, cordless tools, garden machinery, e-bikes and e-scooters.

Be Safe by following a few simple tips:

- Charge batteries when you are awake and alert
- Only use the battery, charger and cables supplied by the manufacturer
- Before you go to bed, check anything still charging is switched off
- Do not overload sockets
- Do not charge e-bikes and e-scooters in escape routes.

All batteries should be disposed of safely to prevent fire hazards. They should never be put in household rubbish or recycling bins as the recycling process can compact and damage them, leading to the ignition of the lithium.

Fires in refuse vehicles damage the vehicles and roads, and can cause road closures and significant delays to bin collections.

### How to dispose of batteries

To find your nearest battery collection bin, visit <https://www.recyclenow.com> or <https://www.recycleyourelectricals.org.uk>

### Help keep your home and family fire safe – complete our online home safety check

Visit the Cambridgeshire Fire and Rescue Service website and complete the online home safety check to carry out your own fire risk assessment.

Answer simple questions about you and your home, then use the printable action plan to help keep your home and family safe.

Visit [https://bit.ly/Home\\_Safety\\_Check](https://bit.ly/Home_Safety_Check)

For more information log on to [www.cambsfire.gov.uk](http://www.cambsfire.gov.uk), or call 01480 444500.

You can also follow us on social media.

## TIMES PAST

### Little Bits of This and That

The following 'snippets' of news were sourced over twenty years ago by Stan and Jean Ralls who lived in Bridge Street. All items were originally published in local newspapers.

### **Royal Marriage**

**HRH Prince of Wales with  
HRH Princess Alexandra of  
Denmark 10th March 1863**

*This great event was celebrated in Whaddon in a manner that deserves a passing notice. The labourers and their families were cared for by their respective employers; the widows, the old men and orphan children dined at the expense of the Parish; the school children were provided with a capital dinner and tea by the kindness of the vicar; a medal was also given to each; and after adjourning to the Church to sing a special anthem, the day was finished with rural sports, fireworks, a bonfire, and the illumination of the church, the beacon on the tower being very effective and seen from a great distance.*

*Royston Crow March 25th 1863*

### **HELP**

WANTED, good PLAIN COOK, not under 25, no washing boots or knives. Apply or write, Mrs A.J. Palmer, the Moor, Whaddon.

*Royston Crow, 24th October 1902*

### **SOUP FOR THE POOR**

Through the generosity of Mrs E.J. Eames of the Vicarage, soup is given away twice a week to the old people, and those with large families, and is much appreciated in this cold weather.

*Royston Crow, December 9th 1904*

### **Opportunities**

**ONTARIO, CANADA  
FARMERS & FARM HANDS  
WANTED**

To any qualified man willing to work on the land, employment is guaranteed at good wages. Domestic servants are in great demand (wages £2 to £4 per month)

Ontario produces  $\frac{1}{4}$  to  $\frac{1}{2}$  of the Field Crops of all Canada  $\frac{1}{2}$  of the Fruit and  $\frac{3}{4}$  of the Dairy Produce.

**In 1910 the Grass and Hay Crops of Ontario were worth more than the entire wheat crop of all Canada**

Twenty million acres of Crown Land waiting for settlement. Write – Mr.N.R.Colcock, Ontario Government Agent, 163 Strand, London.

Please mention this paper.

*Royston Crow March 21st 1913*

## TIMES PAST cont.

### **Fear of the Unknown Going into Service**

*On Monday last there was considerable anxiety in the home of a resident of Whaddon through the non-return of one of his daughters who earlier in the day had been sent to Royston to see her sister and to do some shopping. A search was made for the girl as letters had been found of a disconcerting nature written by the girl. As she could not be found, the assistance of the police was invoked and on Wednesday morning P.C. Frost and the girl's father who had heard a rumour that the missing girl was in Barkway met her near Royston on her way home. It seems that the only reason for the girl's thoughtless act was her dread of going into service.*

*Royston Crow, December 13th 1912.*

**WHADDON VICARAGE  
MESSRS. NASH & SON  
On Tuesday next, 26<sup>th</sup> June, 1888  
MODERN HOUSEHOLD  
FURNITURE  
and EFFECTS  
500 VOLS. OF SCHOOL  
AND  
OTHER BOOKS  
FURNITURE OF 8 BEDROOMS &c**

### **A Bankrupt Curate!**

The Rev E Webster, a curate in Whaddon, was declared bankrupt in 1888. During the inquiry into his affairs at the Bull Hotel in Royston it appeared that he had had a chequered career. He had been bankrupt before arriving in Whaddon; had run schools in Rhyl, Southport, Chesterfield, Cleethorpes, Worksop, Pershore and Bristol. In fact he had been bankrupt twice before in 1870 and 1873. The case occupied many column inches in the *Royston Crow* of June 1888. Subsequently all his effects were sold.

-----

### **Occupational Hazards – The Dangers of Farming**

On Tuesday, 5<sup>th</sup> October 1819, an inquest was taken at Whaddon before John Ingle Esq., coroner, to view the body of Joseph Pearce, a labourer, who was found dead on Monday morning, 4<sup>th</sup> October, in his master's barn, where he had been threshing. Verdict, *died by a visitation of God.*

.....

In December of that same year, a second death and inquest was reported by John Saunders, a servant to Mr Beaumont, who was killed by a kick from his master's horse as he was cleaning it.

*Cambridge Chronicle 1918*



On Monday morning, March 18<sup>th</sup> 1880, an accident which might have proved fatal happened to Mr William Gentle, foreman to Mr J Beaumont. It appears that Gentle was superintending the work with a scarifier in the fields, when a gun which had been laid across the scarifier went off and the shot lodged in his left arm. Mr Beaumont's trap was soon got ready, and the sufferer was conveyed to the premises of Dr Parkinson of Melbourn, under whose care he progressed favourably.

*Royston Crow March 26<sup>th</sup>  
1880*



**Village Garden  
& PROPERTY MAINTENANCE**

Family run Business based on  
Meldreth Road

Grass Cutting, Hedge Cutting,  
Fencing, Pressure Washing, Gutters,  
Plastering and much more...

Contact:

Neil Porter - 07540605860

Email:

[villagegardenandproperty@gmail.com](mailto:villagegardenandproperty@gmail.com)

**OH DEAR!!  
TWO TRAP ACCIDENTS IN  
ONE WEEK**

On Friday evening last a Royston lady, with a lady and gentleman friend, were out for a drive, and after taking tea in the village started on the return journey Melbourn way. When opposite Mrs Palmer's gate the pony stumbled and went down, throwing the occupant of the trap into the road. One lady had some teeth knocked out and the other a severe shaking, while the gentleman fell onto the pony's back and so escaped. A gentleman from Meldreth was just behind on his bicycle and rendered assistance. The pony's knees were badly cut.

On Saturday evening last a butcher's cart got overturned. It appears that Mrs Disbrey's man was delivering meat about eight o'clock in Bridge Street when the pony got one wheel in the brook turning the cart over and upsetting most of the contents of the hamper. Help was at hand and the pony's head kept out of the water, while a rope was fetched and after some trouble the pony was got out. Some of the meat and sausages were left to feed the fishes as it could not all be found in the mud and weeds.

*Royston Crow 24<sup>th</sup> October 1902*

## WHADDON PARISH COUNCIL MATTERS

### **Parish Councillor vacancy**

Following the resignation of Lee Ginger from the Parish Council- effective 1<sup>st</sup> January 2025 the Parish Council has advertised for the co-option of a new councillor. We have received expressions of interest and are currently in the process of appointing that new councillor. The Parish Council will advise as soon as the co-option is complete.

### **New Whaddon News editor**

The Parish Council would like to welcome Viv Williams as the new editor of the Whaddon News. We are sure that all Parish residents will continue to support Viv in providing material for inclusion in Whaddon News. Any material to be included should be emailed via [newseditor@whaddon.org](mailto:newseditor@whaddon.org)

### **Parish Precept**

The PC have agreed to maintain the precept at £19,313.39. This precept is the amount of money that the council requires from local taxpayers to fund its annual budget.

### **MVAS update (Mobile Speed Activated Sign)**

Cllr Strudwick has met with the Chair of Bassingbourn PC and has been advised that Bassingbourn PC are currently liaising with the barracks re charging of the MVAS battery, as it is not possible to connect their MVAS to a mains supply. Bassingbourn PC's MVAS cameras have recorded an average speed on the A1198 between Kneesworth and Whaddon Gap of 48MPH, which even though still over the speed limit demonstrates a fall in the average speed since the 50MPH speed limit was lowered.

Bassingbourn PC have submitted an LHI (Local Highways Initiative) application, seeking a safer right turn out of the barracks and safer pedestrian crossing for residents in Cardiff Place. Cardiff Place falls within the parish of Whaddon and as such, Whaddon PC will support the application as appropriate.

### **School bus drop off and pick up location**

The PC are awaiting confirmation from the Councils School Transport Team that they have resolved the issue of a safe drop off/pick up location for users of the Bassingbourn Village College School bus. It is hoped that agreement for a more appropriate location will be in place for returning users after the half term break.

### **Melbourn Mobile Warden Scheme**

The PC have agreed to continue to support the Melbourn Mobile Warden Scheme with a charity donation this coming year. The mobile warden scheme

supports people to remain independent in their own homes by providing social contact and practical support. The warden scheme covers a variety of villages in the South Cambridgeshire area, including the parish of Whaddon.

### **Access Via Byway 22**

The PC became aware of an issue of an ambulance unsuccessfully attempting to access Dyers Green via Byway 22 whilst transporting a patient home. As you may recall, the PC together with Cambridge County Council footpaths officer installed a couple of posts at Dyers Green end to restrict width to the regulation 1.95m. A sign installed at Mettle Hill advising ‘Unsuitable for motor vehicles’ was also installed, to restrict inappropriate use of the Byway. Unfortunately, on this occasion the GPS of the Ambulance led them to take this byway, resulting in the ambulance becoming stuck. Thankfully the patient was returned home safely. As a result, the PC has been in immediate contact with the Footpaths Officer who responded urgently contacting the Ambulance Service advising the inappropriate use of the byway and to try to ensure their GPS systems are modified not to use byways.

Luckily, this seems to be the first time this has happened and more importantly our resident returned home safely, but continue to report to the PC any further incidences that may occur (hopefully not) in relation to vehicular access of the byway.

### **Continuing rat problems**

Cllr Strudwick has requested that I remind people that there continues to be a problem with rats in the village. Whilst this is an inevitable consequence of the rural environment in which we live, please all remain aware of what you can do to reduce the risk of encouraging rats into the vicinity.

### **Parish Council Meetings**

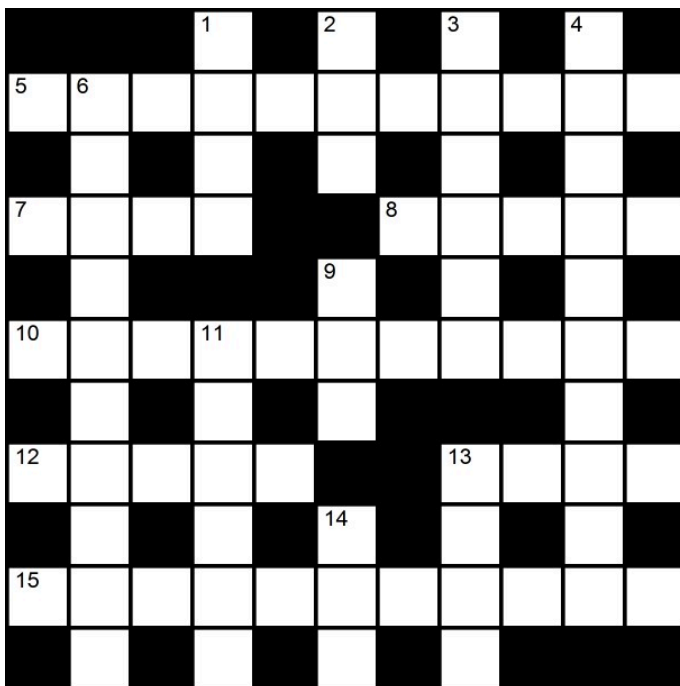
PC meetings normally take place on the second Monday of each month at 7:30 in the village Hall. The next meeting to be held will be **Monday 10th March 2025**. PC meetings are open to the public, so do feel free to come and join us.

Minutes of the PC meetings are also available on the village website [www.whaddon.org](http://www.whaddon.org) and on the noticeboard at the Village Hall in Church Street.

The next **Annual Parish meeting** will be held at 7.30pm on April 28<sup>th</sup> at the Village Hall.

Thank you.  
Anita Birch

## PUZZLE PAGE



### Across

5 Petty (5-6)

7 Stump (4)

8 Farm bird (5)

10 Degree of excitement during a debate (11)

12 Open space in a forest (5)

13 Central Chinese desert (4)

15 Unentitled (11)

### Down

1 Thick slice (4)

2 Large flightless bird (3)

3 Open up (6)

4 Quantifiable (10)

6 Birthplace (10)

9 In favour of (3)

11 Dais (6)

13 Present (4)

14 Fenland cathedral city (3)

Request solution by emailing [newseditor@whaddon.org](mailto:newseditor@whaddon.org)



**Your Local**  
**HANDY MAN**  
**NO JOB TOO SMALL**

**Specialising in DIY jobs around the home and garden.  
Need help with DIY call for a no obligation estimate.**

**Ashley Ives, High Street, Orwell**  
**Best contacted on my mobile: 07900 815 262**  
**Or Email: 4ashley.ives@gmail.com**  
**If you prefer, leave a message on 01223 207 342**

**Public liability insured, DBS cleared, references available**



### Neighbourhood Watch in Whaddon

Whaddon has an active Neighbourhood Watch scheme, which is co-ordinated by Malan Peyton. Malan can be contacted on 07836 549871.

**Dial 999 to report a crime in progress, or when lives are at risk.**

**For non emergency matters please consider using**  
**[www.cambs.police.uk/report](http://www.cambs.police.uk/report) or**  
**web chat #safercambs to report a crime.**

Both of these are likely to have a quicker response than calling 101.

The “WhaddsApp” group also works very well for immediate alerts to the village. The village remains a very safe community with very little crime.

Unfortunately one of the crimes we do see from time to time is hare coursing. Please dial 999 if you suspect that this is occurring but **do not approach** those involved.



Suzanne Hill (Porter) - of Meldreth Road, Whaddon

*'Your local Financial Adviser, helping you to plan and protect your money for yourself and your family's future'*

I work for Harris Associates Wealth Management Ltd, a Senior Partner Practice of St. James's Place

Please contact me for an initial chat to see if I can help

M: 07835400637 E: [suzanne.hill@sjpg.co.uk](mailto:suzanne.hill@sjpg.co.uk)

**Protection | Investment Planning | Retirement Planning**

Other services the Practice offers – Inheritance Tax and Estate Planning and Long-Term Care Planning

Harris Associates Wealth Management Ltd is an Appointed Representative of and represents only St. James's Place Wealth Management Plc (which is authorised and regulated by the Financial Conduct Authority) for the purpose of advising solely on the group's wealth management products and services, more details of which are set out on the group's website. The 'St. James's Place Partnership' and the titles 'Partner' and 'Partner Practice' are marketing terms used to describe St. James's Place Representatives

**SJP Approved 07/11/2024**



**PC Repairs**

**Advice & Installation of Home Networks**

**Help with Selecting a Computer**

**Fault Finding**

**Brian Girling 01223 208529**

**E-mail [bg@moncraft.co.uk](mailto:bg@moncraft.co.uk)**

We can also provide the following services:  
Design of brochures, posters, business cards etc.  
A4/A3 laminating • A4 Comb-Binding  
Small print runs on A6 to A3 media



**ARRINGTON  
GARDEN CENTRE**



## NEW EVENTS FOR 2025

Hanging Basket Talk - Wednesday 9th April

Children's 'Plant a Pot' Workshop - Wednesday 16th April

Hanging Basket Workshop - Wednesday 23rd April

Full details on our Facebook page and website

HOME GROWN PLANTS | GARDEN SHOP | TOOLS | CONTAINERS | & MORE

A1198/Ermine Way, Arrington, SG8 0AG

What3words: loafer.pasta.mailers

Tel: 01223 208194

[www.arringtongardencentre.co.uk](http://www.arringtongardencentre.co.uk)

[manager@arringtongardencentre.com](mailto:manager@arringtongardencentre.com)



# David and Mark Green

We are two brothers from Whaddon with 5+ years of experience in the building trade and can carry out many aspects of works including:

Patios

Brickwork

Fencing

Carpentry

Bathrooms

Plumbing works

Driveways

Window replacement

Plus more

Contact either of us for a quote.

**David**

**Mark**

Mobile: 07563138547

Mobile: 07895530892

Email: [Davidgreen610@yahoo.co.uk](mailto:Davidgreen610@yahoo.co.uk) Email: [Markgreen880@yahoo.co.uk](mailto:Markgreen880@yahoo.co.uk)

## USEFUL TELEPHONE NUMBERS

### Citizens Advice:

Cambridge 03448 487979  
Royston 03444 111444

Age UK: 0300 666 9860 Mon - Fri 9am - 3pm  
infoandadvice@ageukcap.org.uk  
[www.ageukcap.org.uk](http://www.ageukcap.org.uk)

### Councillors:

County- Susan Van de Ven 07905 325574  
District- Jose Hales 01763 221058  
Sally Ann Hart 07791 233303  
MP Pippa Heylings [pippa.heydings.mp@parliament.uk](mailto:pippa.heydings.mp@parliament.uk)

### Doctors:

Orchard Surgery, Melbourn 01763 260220  
Granta-Royston Heath Centre 0300 2345555 opt 7  
Granta- Royston Market Hill 03002345555 opt 5  
Roysia Surgery 01763 243166

Hospital: Addenbrookes 01223 245151

Police: Non emergency 101

Samaritans: 01223 364455 (charges)  
116 123 (free)

### Transport:

National Rail Enquiries 03457 484950  
Myalls of Bassingbourn (Bus 17) 01763 243225  
A2Buses (Bus 26) 0800 001 6255  
Stagecoach run P&R from Trumpington

### Utilities:

Anglian Water 03457 145145  
Cambridge Water Co 01223 706050  
Electricity Emergency/supply loss 08007 838838

### Vets:

Melbourn Veterinary Surgery 01763 262696  
Royston Veterinary Surgery 01763 242221