

# WH DDON

# NEWS

SEPTEMBER  
2024



[www.whaddon.org](http://www.whaddon.org)



## DATES FOR YOUR DIARY

1st Sept	Cricket	9th Oct	Charity Quiz
4th Sept	Coffee Morning	14th Oct	Parish Council
8th Sept	Pet Service Cricket	16th Oct	Coffee Morning
9th Sept	Parish Council	6th Nov	Coffee Morning
18th Sept	Coffee Morning	10th Nov	Remembrance Service
28th Sept	Race Night	11th Nov	Parish Council
2nd Oct	Coffee Morning	13th Nov	Charity Quiz
6th Oct	Harvest Festival	20th Nov	Coffee Morning
		15th Dec	Carol Service

### NEWSLETTER

The deadline for the next Whaddon News is **12<sup>th</sup> November**.  
 Joan Pascoe 07753 316714.  
 Email: [joanpascoe@aol.com](mailto:joanpascoe@aol.com)  
 As always any items of local interest are always very welcome.

### Mobile Library

Every 4th Wednesday  
 10.00 - 10.30  
 Meldreth Road

Wednesday 25 September

Wednesday 23 October

Wednesday 27 November

### VILLAGE HALL HIRE



Special rates for those within the village - ideal for birthday parties and most functions.

Village Rate: £9 per hr  
 Non-village Rate: £15 per hr

Please contact:  
[whaddonhalltrust@whaddon.org](mailto:whaddonhalltrust@whaddon.org)

### BIN COLLECTION DATES

Thurs 5 Sept	█	Thurs 24 Oct	█
Thurs 12 Sept	█	Thurs 31 Oct	█
Thurs 19 Sept	█	Thurs 7 Nov	█
Thurs 26 Sept	█	Thurs 14 Nov	█
Thurs 3 Oct	█	Thurs 21 Nov	█
Thurs 10 Oct	█	Thurs 28 Nov	█
Thurs 17 Oct	█	Thurs 5 Dec	█

Cover picture: Harvest time in Whaddon  
 Photographs: (L) David Grech, (R) Lauren Coningsby, (B) John Kirby

## WHADDON VILLAGE HALL and RECREATION GROUND TRUST

First I would like to echo the thanks to all those people who gave up their time to support the Village Fete. All feedback has been extremely positive and everyone seemed to have a great time. As well as raising money for St Mary's and the Village Hall it is a great event to get the community together.

We are currently in the middle of applying for grants to assist in funding the installation of solar panels and battery storage for the Village Hall. The plan would be to install these in the New Year.

Our next fund raising event will be a **Race Night on 28th September** at the Village Hall, watch out for posters and e mails over the next few weeks.

Thanks again for everyone's support and we hope to see you on the **28th September**.

Jonathan Birch

### WHADDON NEWS

You will be aware that Joan Pascoe is retiring as editor of the *Whaddon News* at the end of 2024. Joan has done a fabulous job for 22 years, and everyone is incredibly grateful to her.

We urgently need expressions of interest from villagers who will be able to take this task on from the beginning of 2025. It is not onerous, there being four issues per year, usually March – June – September – December. Please contact either Joan ([joanpascoe@aol.com](mailto:joanpascoe@aol.com)) or Angela Culver, the Parish Clerk ([whaddonparishclerk@outlook.com](mailto:whaddonparishclerk@outlook.com)) for more information.

I cannot over-stress the importance of the *Whaddon News* as a medium for communication with everyone in the village. The Parish Council would be really grateful if someone would offer to take it on, as without an editor, it will cease publication and it will leave a void in our close-knit village that other media cannot fill.

Do give some thought whether you could spare a little time every three months to help.

Thank you for reading this, Nigel Strudwick (Chairman, Whaddon PC)



## ST MARY'S CHURCH WHADDON

### FUTURE SERVICES

8th September	Pet Service	3:00pm
6th October	Harvest Festival	3:00pm
10th November	Remembrance Service	10:45am
15th December	Christmas Carol Service	6:00pm
24th December	Carol-oke Christmas Carols	5:00pm
25th December	Holy Communion Christmas Service	9:30am

### HARVEST FESTIVAL

**6th October at 3pm**

Please come and help decorate the church during the week if you can

**All decorations need to be finished by Saturday morning.**

Your help is much appreciated.



### Contact Details for Rev. Helen Orr

Tel: 07761 241190 Email: [vicar@whaddon.org](mailto:vicar@whaddon.org)

My days in the parishes are Tuesday and Thursdays and weekend services



### Friends or tradesmen visiting ?

The roads through our village are not that wide so it may be safer for their cars or vans to be parked off the road either on your drive or, if that's not possible, in the village hall car park for the day.



# **Pet Service St Mary's Whaddon**



**An all age and all creatures service where we can give thanks to God for life in all of its variety. (If you bring your pets, please ensure that you bring whatever they need to keep themselves and others safe).**



**Sunday  
8 September  
3pm**



## Whaddon Golf Centre



The lovely summer weather finally arrived and the course is busy with golfers and the ice cream fridge is stocked with ice cream.

Slice of Price will be here with pizza, check for the posters or Facebook notifications.

We will have a Halloween celebration in October. Look out for the poster or a WhaddsApp.

We are looking forward to the quizzes which will start on 9th October.

Don't forget we are open to all. Pop in for a coffee or a quick 9 holes. If you have never played before come and have a go. We have everything that you need to play.

Every Friday we are open until late for the range and the clubhouse. All are welcome.



We also said farewell to Richard's Dad, Ken Green, who died in June. We held a funeral tea at the Golf Centre and he is watching over the centre from the church yard. Thanks to all who have supported us.



### **Village Garden & PROPERTY MAINTENANCE**

Family run Business based on Meldreth Road

Grass Cutting, Hedge Cutting, Fencing, Pressure Washing, Gutters, Plastering and much more...

Contact us:

Neil - 07540605860

Suzanne - 07835400637

Home - 01223 207960

Email - [villagegardenandproperty@gmail.com](mailto:villagegardenandproperty@gmail.com)

## SPEEDWATCH

Speedwatch at the moment is on its summer break. This spring we held numerous sessions in various locations round Whaddon. The percentage over the 30 mph speed limit varied with the time of day and position of the camera. From 3 % to 13 %. The place where most people were caught is outside Bumpkins pre-school with cars hurrying towards Meldreth. Top speed is usually around 44 mph.

Are there any volunteers out there to help this small group? A couple of times I had to cancel events. I require 2 people to help me to run a session. It doesn't take too much time. Each session runs for just 1 hour.

If you would like to help please contact me [d.short999@btinternet.com](mailto:d.short999@btinternet.com)

Thanks

David Short

**PC Repairs**

**Advice & Installation of Home Networks**

**Help with Selecting a Computer**

**Fault Finding**

**Brian Girling 01223 208529**

**E-mail [bg@moncraft.co.uk](mailto:bg@moncraft.co.uk)**

We can also provide the following services:  
Design of brochures, posters, business cards etc.  
A4/A3 laminating • A4 Comb-Binding  
Small print runs on A6 to A3 media

## *TIMES PAST*

The third instalment of Bassingbourn Airfield will feature in the December issue.

# SUSTAINABLE WHADDON

- Opportunities to enhance ecology and biodiversity
- Opportunities to reduce our carbon footprint

## A Wilder Look at Lawns

The closely cut 'English lawn' was created in the 17<sup>th</sup> century and was a symbol of aristocracy or the upper classes. This must have been hugely labour intensive, especially as the lawnmower wasn't invented until 1830, inspired by a machine for cutting cloth. Times are changing, and maybe a new image of the traditional lawn is needed.

Most people in Whaddon have some lawn and, walking round the village in the spring, I was encouraged to see how many had carefully mown around patches of cowslips or buttercups. There is a wonderful lawn in Dyers Green full of snake's head fritillaries in April, and another villager was telling me how bee orchids had appeared in his lawn when he left an area unmown. These are all native species which grow in the wild in this part of England, along with daisies, dandelions, clover, bird's foot trefoil, germander speedwell, herb robert and many other species. Are these weeds or wild flowers? It's just a matter of perspective – embrace them all and there won't be a weed in sight!



For those with larger lawns, using a varied cutting regime in different areas will allow wild flowers to grow, flower and seed. Keep some areas short as pathways and hunting grounds for worm-eating birds. Let the rest grow a little longer, mowing some of it every 3-4 weeks so allowing flowers to bloom and attract bees. Let some grass stay long all summer as this is beneficial for caterpillars, grasshoppers and other insects, increases the number of 'good bugs' and helps avoid the need to use chemicals. I know it will appear a bit unkempt by this stage, making the move away from a traditional lawn all the more challenging, but think of the benefits to wildlife. Also, longer grass has deeper roots making it more resilient to dry weather and less likely to turn



brown. It won't come as a surprise that artificial grass is disastrous for wildlife and the environment, but fortunately plastic lawns are currently few and far between in Whaddon.

### **Whaddon Seed Exchange Update**

We're pleased to report that the Parish Council approved our request to house a seed exchange within the Meldreth road telephone box. The purpose of this is to enable gardeners to easily swap vegetable and flower seeds, including those collected from their own gardens and any spare commercial seed, thus enabling more sustainable gardening and hopefully providing villagers with interesting seed to grow. Shelves have been installed in the phone box and small boxes arranged in alphabetical order will be available to store seed envelopes. A successful exchange relies on seed donations, so please start to harvest garden seeds and dig-out any unwanted commercial seed packets. Harvested seeds should be



separated from the surrounding tissue or pulp and air dried for several days. Once dry they should be placed in a paper bag or envelope, labelled with the plant name (and optionally any description or growing tips) and deposited in the seed exchange. Currently the collection includes flowers such as *Tragopogon porrifolius* (purple salsify), *Cerinth major* 'purpurascens' (honeywort), *Aquilegia* (grannys bonnet), *Cyclamen hederifolium*, *Salvia patens*, *Papaver somniferum* (poppy) and vegetables such as broad bean, runner bean and French climbing bean. Please start collecting; your donations will be much appreciated.

### **Sustainable Whaddon at the Village Fete**

The Sustainable Whaddon stall at the village fete hosted a lot of visitors to discuss our ideas and activities to enhance the ecology and biodiversity of our village and reduce our carbon footprint. We also ran a wildflower quiz, gave out free squash plants, had bug hunt Fortune Teller sheets for children and demonstrated a couple of bug hotels that could be readily made at home. Importantly we asked villagers to write down their own thoughts for sustainable living and we received a number of interesting ideas that we can follow up in the future. Thanks to everyone who attended our stall.

*Jenny Grech and Chris Selway*

The next meeting of Sustainable Whaddon is on Wednesday 23<sup>rd</sup> October and anyone is welcome to attend. You can get in touch with the group at [sustainablewhaddon@whaddon.org](mailto:sustainablewhaddon@whaddon.org)

# Whaddon Village Fete - Saturday 13<sup>th</sup> July

Some may have worried that holding the fete on the 13<sup>th</sup> of the month was tempting fate, but the sun shone and an enjoyable afternoon was had by all. The fete was opened by Ivan the Piper marching in from the churchyard playing a selection of stirring tunes and then, for the next 3 hours, families from the village and beyond, lingered in the sunshine and sampled the varied fare on offer at the 25 stalls, along with the teas and trains in the village hall.



As well as being an enjoyable community event, the fete was also financially successful, raising just shy of £3,000 to be split between St Mary's Whaddon and the Village Hall Trust, and just over £500 more than last year's total. The Fete Committee would like to thank all of those who helped in any way to make the fete such a success, whether helping to put up and take down the produce tent and gazebos, running a stall, entering produce to the show, donating tombola and raffle prizes, or just turning up on the afternoon and opening your purses and wallets. We couldn't have done it without you.

Next year's Village Fete will be held on the afternoon of **Saturday 12<sup>th</sup> July 2025**, and if you would like to get involved, please contact any member of the fete committee listed below. The committee has also met to discuss what might be improved on to make next year's fete even better, and again if you have any thoughts or ideas, please let us know!

Fete Committee: Anita and Jonathan Birch, David Grech, Lorna Green, Claire Hales, Pete Nussey, Deborah Townsend, Caroline Trotter, David Short.



## Knit and Natter



### Mondays 5-7 at the Village Hall

Do you have unfinished projects in a cupboard?

Have you always wanted to learn to knit or crochet?

Do you just fancy a bit of company whilst knitting and purling?

Don't feel limited to Knitting or Crochet, we have needlework going on as well!

Come and join us!

Subs are £6.00 a month or £2.00 for a drop in if you can't make it every week.

We welcome all ages, under18s are £2.00 a month.

If you want more info email Diane Faben [edfaben@gmail.com](mailto:edfaben@gmail.com)



**Located in Wimpole Village Hall and serving the surrounding villages.**

**Open Monday to Friday during term time.**

**For 2 to 4 year olds.**

Highly experienced staff provide stimulating learning experiences through play and structured activities.

Spacious, versatile indoor play space and exciting garden area.

Dedicated Rising 5s session, links with local primary schools.

For more information visit: [www.mothergoosepreschool.co.uk](http://www.mothergoosepreschool.co.uk)

email: [admin@mothergoosepreschool.co.uk](mailto:admin@mothergoosepreschool.co.uk) or

phone: 01223 208527.

## KENNETH LESLIE GREEN 1936 - 2024

As many of you may know, Ken Green, founder of the Whaddon Golf Centre, died in June. The following is taken from his eulogy.

Ken was born on 14<sup>th</sup> July 1936 at the Old Maternity Hospital, Mill Road, Cambridge, the only child of Marge and Fred Green. For many years Fred Green was a timekeeper at the Atlas Stone Company, Meldreth.

Ken spent his childhood living with his parents in a thatched cottage on the High Street, Fowlmere. He attended Fowlmere Primary School and, at the age 11, he moved to The County Boys High School, now Hills Road Sixth Form College.

As a boy he wanted to become a farmer: he told of helping to plough the fields with horses, drove with lorries loaded with watercress to Covent Garden (picked from Fowlmere watercress beds, now the nature reserve) and helped his mother graze 2 goats on the verges of the village. He also learned to play tennis, as a court was nearby, and he sang in the church choir.

At a young age he joined Trumpington Young Farmers Club & later Thriplow Young Farmers Club, where many friendships were forged. He also joined the RAF Cadets.

At 18 years he began his National Service joining the RAF as an aeroplane Fighter Plotter. He worked in the underground bunkers at Northweald (now an RAF museum) where he met his future Best Man, Barry Starling. On leaving National Service he bought a small-holding, down a lane, in Fowlmere, where he bred pigs & kept poultry.

In 1959 Ken met Iris Ludlow, at the Dorothy Ballrooms in Cambridge. Iris was training to be a State Registered Nurse at the Old Addenbrookes Hospital. They married at St Mary's Church, Buckden, Huntingdonshire, on 18<sup>th</sup> November 1961. A bungalow had been built on the small-holding to start their family life together and the lane was subsequently called Green Lane!

When Carol was born in 1963 Iris stopped nursing for several years, to help Ken with the running of the business & bringing up their growing family. In 1965 Cambridgeshire County Council offered Ken the tenancy of Town Farm, Whaddon. Ken was keen to undertake arable farming as well as look after his livestock. At Michaelmas time 1965, when Richard was only 4 days old, they moved to the old Town Farm, farmhouse, which was in a very sorry state of disrepair. Iris remembers it all being a big upheaval, with many journeys in Fred's pick-up truck & a borrowed sugar-beet lorry.

In 1966 the family moved to the new Town Farm bungalow which had been built on the site of some old thatched barns. Rosie was born here in 1968. The old farm house was subsequently sold & renamed Turpins.

Ken spent 30 years farming at Town Farm, growing mixed arable crops and rearing pigs and poultry. In 1987, as farming became less profitable, Ken diversified and built the first Golf Driving Range in Cambridgeshire and later developed the Par 3 Golf course and Clubhouse. Ken was subsequently awarded the Cambridgeshire County Council, County Farms, Jubilee Cup Diploma for the best farming enterprise in Cambridgeshire. Ken also ran the village Post Office from the Golf Centre for 29 years.

In 1994 the landowner, Cambridgeshire County Council, decided that Town Farm was

no longer viable and Ken was able to buy the land on which he had built his golfing enterprise. Town Farm, as such, therefore came to an end but the bungalow continues to be called Town Farm.

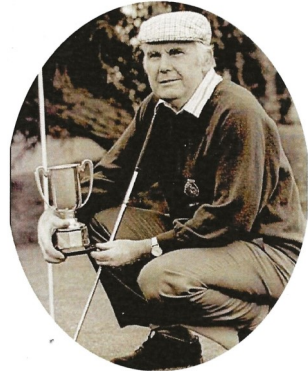
During his farming years Ken was Chairman of the Cambridgeshire Branch of the National Farmers Union, served on several committees and was also Chairman of Whaddon Parish Council.

In 1994 Ken bought an 18-hole Golf Course at Longstanton, transforming it to become a well-respected course, which he called Cambridge Golf Club.

His hobbies were shooting, fly fishing, snooker & golf. He also remained a good tennis player. When they could leave Richard to run the business Ken and Iris travelled visiting many new lands and cultures.

Ken was very proud of his family, especially his four grandsons: Keith, Mark, David & Joel. He always made time for them, his friends and for his many customers.

A funeral was held at St Mary's Church, Whaddon on 15<sup>th</sup> July and Ken was buried in the grave yard, close to the golf course.



## WHADDON GOLF CENTRE

01223 207325

[www.whaddongolfcentre.co.uk](http://www.whaddongolfcentre.co.uk)

Tuesday to Sunday

**Open to All**

9 Hole Par 3 Approach Course

Driving Range

Tuition

Bar

Coffee

Snacks and Ice Creams

Newspapers

# Whaddon Parish Council Matters

## **New Parish Councillor**

At our July meeting, The Parish Council were delighted to co-opt Ben Fairclough of Bridge Street, to fill the vacancy created by the resignation of Claire Hales.

## **Whaddon Gap road safety scheme**

The reduction of the A1198 speed limit to 40 mph has taken place but work to complete the full scheme is still outstanding. The speed recording unit (MVAS unit) may need to have back-up power due to the extremely high volume of traffic on the A1198. Its purchase has been delayed because we need to be reassured that it will have enough solar energy to conduct this function on this busy main road. It is estimated that around 20,000 vehicles use the A1198 at this point daily. The Parish Council discussed the need for the MVAS to collect data, the amount of data that was needed and for what this would be used. The data could illustrate vehicle speeds, the changes in traffic at different times and provide support for any additional changes to the junction. We also agreed to discuss the issues of having a MVAS on the A1198 with Bassingbourn Parish Council before making further purchase decisions.

## **Weedkilling along the edge of our roads**

We are pleased to report that County Highways have at last resumed this function and the road through the village has been treated already.

## **Grass cutting**

There has been some concern about the state of the verges in the village, which has been caused partly because of the exceptionally wet spring and the rampant grass growing thereafter. After a discussion at the July PC meeting, it was agreed that a small group of Parish Councillors, together with a member of the Sustainable Whaddon group, would walk through the village and review the situation and if necessary, adjust the grass cutting specification in the contract with Herts and Cambs Grounds Maintenance to reflect better the 'climate change' growing conditions.

## **Fires in refuse wagons**

The District Councillors reported that there have been a number of fires in refuse vehicles recently, due to batteries which had crushed or been damaged and caught fire. These can be recycled but must be kept in separate bags to the main recycling or waste.

## **Whaddon News editor vacancy**

The PC were concerned that they had received no interest in the upcoming vacancy for the editor role when Joan Pascoe steps down after the December edition. This means that the Whaddon News will **cease to be published** and a

valuable communication tool that was much appreciated by villagers in the recent Parish Plan survey, would disappear. We are very keen to hear from anyone who may be prepared to help...

### **Village Fete**

While strictly outside the remit of this roundup, the Parish Council wish to place on record their deep appreciation to all those involved with this year's Village Fete. The weather was great and it was a most enjoyable event, very well attended by villagers and 'outsiders.' The fete raised just under £3,000 to be split equally between the Village Hall and the Church. A big thank you to all and it's good to see the slightly revamped fete being so successful.

### **Parish Council meetings**

These normally take place on the second Monday of each month at 7.30pm in the Village Hall. The next meeting will be held on **Monday 9<sup>th</sup> September 2024**.

Minutes of PC meetings are on the village website [www.whaddon.org](http://www.whaddon.org) and on the noticeboard at the Village Hall in Church Street.

*Compiled by Lee Ginger*

**Rothwell's**  
Carpet Cleaning

**01223 832 928**  
**www.Rothwells.biz**

### **Carpet Cleaning**

#### **Stone Floor, Upholstery & Rug Cleaning.**

*A few points that make us stand out from the others,*

Rothwell's has been in business since 1993.

We're an honest local family firm.

Our large truck mounted machines mean more cleaning  
& drying power for the best results possible.

Members of both the NCCA and TACCA.

We will move the furniture for a thorough clean.

100% satisfaction or it's FREE.

*Call Oliver and Max Campbell for expert help today.*

Rothwell's, Malting End, Kirtling, Newmarket, CB8 9HH

## Whaddon Cricket Club 2024 - Fixtures and Results

DATE	MATCH	VENUE	RESULT
21 April	Longstowe	Away	Cancelled
28 April	Steeple Morden	Away	Cancelled
12 May	Sandon	Home	Win
23 June	Hare Street	Home	Loss
30 June	Sandon	Away	Loss
7 July	Huffer XI	Home	Cancelled
14 July	Royston Dads	Home	Win
21 July	Guilden Morden	Home	Cancelled
28 July	Hare Street	Away	Loss
4 August	Cantabs	Home	Cancelled
18 August	Train Boys	Home	Win
1 September	Church St v Bridge St	Home	-
8 September	Hare Street	Home	-



**ARRINGTON  
GARDEN CENTRE**



Join Us For Two Informal And Friendly Talks

Wednesday 11th September - Spring Flowering Bulbs

Thursday 10th October - Garden Colour for Autumn & Winter

See social media and website for details

A1198/Ermine Way, Arrington, SG8 0AG

What3words: loafer.pasta.mailers Tel: 01223 208194

[www.arringtongardencentre.co.uk](http://www.arringtongardencentre.co.uk)

[manager@arringtongardencentre.com](mailto:manager@arringtongardencentre.com)







## Bassingbourn Community Library

The Old School Community Centre

Telephone : 07593 853189

[bassingbourncommunity.library@gmail.com](mailto:bassingbourncommunity.library@gmail.com)

Your local volunteer run library has a stock of over 5000 books, and we give access to the Cambridgeshire County Library, from where you can order almost any book.

*And our café is open to sell tea, coffee, cold drinks and delicious treats.*

### Normal Opening Hours

Monday	2 - 4.30pm
Thursday	2 - 4.30pm 6 - 8pm
Saturday	10 - 12 noon



**Library membership is free – so join us today!**

## David and Mark Green

We are two brothers from Whaddon with 5+ years of experience in the building trade and can carry out many aspects of works including:

Patios	Brickwork
Fencing	Carpentry
Bathrooms	Plumbing works
Driveways	Window replacement

Plus more

Contact either of us for a quote.

**David**

Mobile: 07563138547

Email: [Davidgreen610@yahoo.co.uk](mailto:Davidgreen610@yahoo.co.uk)

**Mark**

Mobile: 07895530892

Email: [Markgreen880@yahoo.co.uk](mailto:Markgreen880@yahoo.co.uk)

## NATURE NOTES

Robert Macfarlane in *Landmarks* tells us that “Fizmer” is an old East Anglian word to describe the rustling sound in grass made by the petty agitations of the wind. And “scaunching,” describes vegetation withering in the late summer heat. “We need to keep wonder alive in our description of (...the natural world around us) to provide celebrations of not-quite-knowing, of mystification.” One of the greatest descriptors was the poet Gerald Manley Hopkins who, in *Hurrahing in Harvest* (on 1<sup>st</sup> September 1877) wrote “What wind walks! What lovely behavior of silk-sack clouds!” September is the month of sunlit “silk-sack clouds”. And after the end of the second week, no motes of late-fledged swallows remain to focus our vision.

Tim Dee in *Four Fields* says that, “without a name made in our mouths, an animal or a place struggles to find purchase in our minds or our hearts.” Even as long ago as 2008, the Oxford Junior Dictionary famously (famously because there was quite a hue and cry) dropped words like acorn, adder, ash, beech, bluebell, buttercup, catkin, conker, cowslip, dandelion, hazel, heather, heron, ivy, kingfisher, lark, nectar, newt, otter, willow (as well as Whitsun and Pentecost) so that new words might be introduced, like blog, broadband, bullet-point, celebrity, chatroom and voicemail. In my view, a name doesn’t just have the power to summon recollection, it is also a catalyst for curiosity.

This month, the farmers are busy preparing the seedbeds for sowing next year’s winter wheat and barley against the clock of wetter autumns. The grain harvest was pretty well in the sheds by the end August and yet the Harvest moon (September 17<sup>th</sup> and a Super moon this year) is the full moon closest to the Autumn Equinox (22<sup>nd</sup> September) and Michaelmas Day, on 29<sup>th</sup>

September, was when harvest should have finished fifty years ago. Our seasons and the farming calendar have shifted some 4 or more weeks earlier than hitherto. Michaelmas Day is the feast day of St Michael, the Archangel who wrestled with Satan. You would roast a goose which had been fed on the grain left to lie in the field after the corn had been cut.

In our gardens, the walnuts start to fall (if the squirrels and crows don’t harvest them first) and the apples ripen. Bramley apples stand in buckets outside people’s homes for passers-by. Every Bramley apple (the UK’s most popular cooking apple) comes from a tree that originated from grafts of a single parent tree in Southwell, Nottinghamshire, now 200 years old. Apples are extremely heterozygous, meaning every pip will grow into a different tree with unique characteristics and fruit. The Victorians loved them and made hundreds of cultivars, many of which have since been lost. Apple orchards have declined by 56% since 1900, according to the National Trust, as many orchards were on the outskirts of towns and cities which have since expanded massively.



*Harlequin ladybird with distinctive white triangle on the head*

Our two most common ladybird species are the 7-spotted (seven black spots on red wing cases) and the invasive, harlequin (many different hues and markings, but as well as the white “cheeks”, it has a distinctive white triangle on the very top of

its head). Despite their seemingly ungainly flight, ladybirds have been recorded flying at 37 mph which is as fast as a horse can gallop. They have also been recorded travelling as far as 74 miles in a single flight (I have puzzled over how this could possibly be measured!). They reach altitudes of 3,600ft in order to catch a following wind to disperse to new feeding grounds rich in aphids.

The gatekeeper butterfly is still flying in September. One of our last butterflies to emerge, it looks like a meadow brown but is smaller and more orangey. In fact, it is also called the hedge brown and likes bramble flowers and ragwort flowers and flutters around tall vegetation that borders field gates and hedges. It can be seen in Clunchpit wood and up on the Downs.

And you will also see the common carder bee, with fur the colour of honey. This bee has two generations each year and the nest persists well into October/November. These nests are often targeted by a brood parasite: the Field cuckoo bumblebee, which do not collect pollen for their offspring (and so have no pollen baskets or, indeed, a worker caste) but instead it lays its eggs in the common carder's nest.



The yellow-legged Asian hornet is an invasive species from Asia and first arrived in Europe in 2004. It has spread into Spain, including the Island of Majorca, Portugal, Italy, Belgium, Germany Switzerland, the Channel Islands and, since 2016 (Tetbury, Gloucester), the UK. Asian hornets are principally predators of insects,

particularly pollinating insects, including honey bees. The fear is that hornet populations will have a serious impact on our insect diversity. One Asian hornet will predate 25-30 honey bees a day, taking them back to the hornet's own nest. 150-500 new Queens start emerging from their nest in September/October to mate and then find somewhere to hibernate, before starting a new colony next year. A honey bee colony, by contrast, will produce only one new Queen.



The **Asian hornet** can be distinguished easily from our native hornet, so it is important to learn the differences between the two. The Asian hornet has a black abdomen with only a few bars of yellow/orange at the (dangerous) end of the body. The extremities of the legs are yellow and it has an orange face. By contrast, our **European hornet** resembles a large wasp, with a yellow and black striped abdomen and a brown thorax (the body part between the head and the lower body which holds the wings and its brown legs). The face is yellow and brown and it is also the larger of the two hornets.

All suspected sightings of the Asian hornet should be reported. Photos or video and location should be emailed to [alertnonnative@ceh.ac.uk](mailto:alertnonnative@ceh.ac.uk) or you can download an app on to your smartphone "Asian Hornet Watch" which has a GPS in the app which will send the location of your suspected sighting.

*Perry Littleboy  
Bassingbourn*

## REGULAR ACTIVITIES AT THE VILLAGE HALL

Monday	17.00 - 19.00	Knit and Natter
Tuesday	09.15 - 10.15	Yoga
	18.00 - 19.30	Dog Training
	20.00 - 21.00	Table Tennis
Wednesday	10.30 - 12.00	Coffee morning (1st & 3rd Wed )
Thursday	18.25 - 20.25	Pilates
Friday	09.15 - 11.30	Yoga
	17.45 - 19.15	Dog training
	20.00 - 22.00	Royston & District Model Railway Club



LOUISE TRENWITH

## BONFITNESS PILATES

Est. Sept 2011

AT LOCAL VENUES

[WWW.BONFITNESSPILATES.CO.UK](http://WWW.BONFITNESSPILATES.CO.UK)

[louise@bonfitnesspilates.co.uk](mailto:louise@bonfitnesspilates.co.uk)

07867 675 389

PILATES MAT CLASSES & ONE TO ONE SESSIONS

## N. HERTS AND DISTRICT CITIZENS ADVICE BUREAU

The **Royston** office is open **Monday** and **Wednesday** 9.30am to 12 noon.

To contact the local CAB please call 01462 689801 and leave a message or email: [northhertscab.org.uk](mailto:northhertscab.org.uk)

The CAB also hold a session at the **Melbourn Hub** on **Wednesdays** 9.30am to 11.30am. No need to book - just drop in.

Alternatively contact the CAB national phone service: Tel 0800 144 8848.

## HOW ARE YOU?

Connecting with others, getting active, learning a new skill, being creative, seeking professional support, exploring the outdoors, volunteering – all these things (and more) can improve wellbeing...but it isn't always easy to know what is on your doorstep or to feel comfortable trying something new.

[How Are You South Cambs](#) is a website that brings together everything local in the district (including Royston) that boosts mental wellbeing. Just like our physical health, we all have mental health and we all need to look after it – what that looks like for each of us is unique. The How Are You South Cambs website gives you the factual information you need to find a wellbeing boost, alongside videos, photos, quotes and a description of what to expect when you go for the first time. If you are on Facebook, give the How Are You South Cambs Facebook page a follow too [@HowAreYouSouthCambs](#)

We're also keen to discover, share and support what is good for wellbeing in South Cambs and Royston – what it is you value for your health and wellbeing. If you know about something that we should know about, please contact Charity Green (the How Are You South Cambs Coordinator) on [HowAreYou@cpft.nhs.uk](mailto:HowAreYou@cpft.nhs.uk) – she'd love to hear from you.

*H.A.Y. Cambridgeshire & Peterborough is brought to you by Cambridgeshire & Peterborough NHS Foundation Trust.*



**Specialising in DIY jobs around the home and garden.  
Need help with DIY call for a no obligation estimate.**

**Ashley Ives, High Street, Orwell  
Best contacted on my mobile: 07900 815 262  
Or Email: [4ashley.ives@gmail.com](mailto:4ashley.ives@gmail.com)  
If you prefer, leave a message on 01223 207 342**

**Public liability insured, DBS cleared, references available**

## SUSAN VAN de VEN Cambridgeshire County Councillor

### Zoom Cuppa Surgeries: Mondays 5 - 6PM

If you'd like to meet with your councillors by Zoom, to bring any concerns or ask any questions, please come along to our weekly Zoom Cuppa Surgery, now on Mondays from 5-6 PM. Please contact Sally Ann for a link:

[Sallyannhart@riskingonpurpose.com](mailto:Sallyannhart@riskingonpurpose.com).

Alternatively, you can contact Susan on 07905325574 or email

[susanvandeven5@gmail.com](mailto:susanvandeven5@gmail.com)

### Monthly Newsletter:

Susan writes a monthly e-newsletter on issues affecting our area – please do let her know if you'd like to receive it, or would like anything to be included in it. Susan van de Ven County Councillor for Bassingbourn, Melbourn, Meldreth and Whaddon.

## PIPPA HEYLINGS MP

South Cambridgeshire

If you are a constituent and need to raise a matter with me, please email me at [pippa.heydings.mp@parliament.uk](mailto:pippa.heydings.mp@parliament.uk)

Please include your name and address.



### ROYSTON, BUNTINGFORD & SOUTH CAMBRIDGESHIRE

#### QUIZ NIGHT

Saturday 28th September 2024

Arrive 6.45pm for 7.30 pm start.

at

#### Meldreth Village Hall

Teams of up to 6 people welcome  
Can't get a team together - contact us and we will include you in a team

Tickets £14 per person (includes an Honest Fig grazing box and a dessert)

#### LITERARY LUNCH

Thursday 12th September 2024

The Old Bull Inn, Royston

Buffet lunch from 12.15 - 2.15pm

Tickets: £15.00 including lunch

Author Wafa Tarnowskawill share her inspiring story

#### \*Nour's Secret Library\*

It tells of Nour and her cousin building a secret library in war-torn Syria. Illustrated by Vali Mintzi, this contrasts the colourful dreams of children with the stark reality of their city.

For enquiries or to book please ring 01763 262262, email [events@hrsdc.org.uk](mailto:events@hrsdc.org.uk) or on line at: [www.hrsdc.org.uk/events](http://www.hrsdc.org.uk/events)

WHADDON VILLAGE HALL TRUST	
Jonathan Birch	Chair
Karen Coningsby	Secretary
Peter Hasleden	Treasurer
Gabby van Poortvliet	Member
Claire Hales	Member
Marine Boulter	Member
Steve Coningsby	Member
Terry Allison	Holding Trustee
Lee Ginger	Holding Trustee
Please send all enquiries, including Village Hall bookings, to <a href="mailto:whaddonhalltrust@whaddon.org">whaddonhalltrust@whaddon.org</a>	

PARISH COUNCILLORS	
Dr Nigel Strudwick	Chairman
Deborah Townsend	Vice Chair
Anita Birch	Councillor
Will Elbourn	Councillor
Lee Ginger	Councillor
Joanne Hart	Councillor
Ben Fairclough	Councillor
Angela Culver	Parish Clerk/ Finance Officer
All Parish Council enquiries should be made to the Parish Clerk.	
Tel: 07565 381203 email: <a href="mailto:whaddonparishclerk@outlook.com">whaddonparishclerk@outlook.com</a>	

## Neighbourhood Watch in Whaddon

Whaddon has an active Neighbourhood Watch scheme, which is co-ordinated by Malan Peyton, who can be contacted on 07836 549871.

**Dial 999 to report a crime actually happening or when lives are at risk.** For a non-emergency matter please consider using [www.cambs.police.uk/report](http://www.cambs.police.uk/report) or web chat #safercambs to report a crime. Both of these are likely to have a quicker response time than dialling 101.

The 'WhaddsApp' group also works very well for immediate alerts to the village but please remember that the village remains a very safe community with very little crime.

Unfortunately, one of the crimes that we do see from time to time, is hare coursing. Please dial 999 if you suspect that this is occurring but please **do not approach** the people concerned yourself.

## USEFUL TELEPHONE NUMBERS

### **Citizens Advice:**

Cambridge 03448 487979

Royston 03444 111444

### **Councillors:**

County: Susan van de Ven 07905 325574

District: Jose Hales 01763 221058

Sally Ann Hart 07791 233303

### **Doctors:**

Orchard Surgery, Melbourn 01763 260220

Granta Royston Health Centre 0300 2345555 option 7

Granta Market Hill Surgery, Royston 0300 2345555 option 5

Roysia Surgery, Royston 01763 243166

### **Hospital:**

Addenbrooke's Hospital 01223 245151

### **Police:**

Non emergency Number 101

**Samaritans:** 01223 364455 (charges)

116 123 (free)

### **Transport:**

National Rail Enquiries 03457 484950

Myalls of Bassingbourn (Bus 17) 01763 243225

Centrebus (Bus 26) 0116 410 5050

### **Utilities:**

Anglian Water 03457 145145

Cambridge Water Company 01223 706050

Electricity Emergency & Supply Loss 08007 838838

### **Vets:**

Melbourne Veterinary Surgery 01763 262696

Royston Veterinary Surgery 01763 242221

## **WHADDON NEWS ADVERTISING - NEW RATES**

	<b>One issue</b>	<b>Four issues (1 year)</b>
Quarter page	£10.00	£32.00
Half page	£15.00	£48.00
Full page	£25.00	£80.00

Contact Angela Bridges, the Parish Clerk:

[whaddonparishclerk@outlook.com](mailto:whaddonparishclerk@outlook.com)